

## CREATES STRAIGHT LINE SEGMENTS



Click LINE and see at the command entry - *Specify first point:*

### Continue

Continues a line from the endpoint of the most recently drawn line.



before pressing ENTER

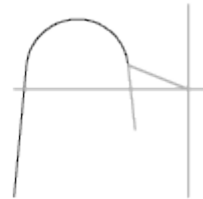


after pressing ENTER

If the most recently drawn object is an arc, its endpoint defines the starting point of the line, and the line is drawn tangent to the arc.



before pressing ENTER



after pressing ENTER

### Close

Ends the last line segment at the beginning of the first line segment, which forms a closed loop of line segments. You can use Close after you have drawn a series of two or more segments.



before entering



after entering

### Undo

Erases the most recent segment of a line sequence.



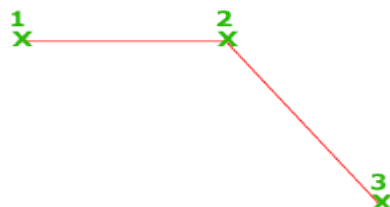
before entering



after entering

Entering **u** more than once backtracks through line segments in the order you created them.

With LINE, you can create a series of contiguous line segments. Each segment is a line object that can be edited separately.



## COORDINATE SYSTEM

At the end of this course, the student will be able to

- Know 3 figures coordinate system used by AUTOCAD
- Draw easy painting by using 3 figures coordinate system
- Draw by using Direct Distance Method
- Use basis directive most important Autocad to generate easy painting namely LINE directive

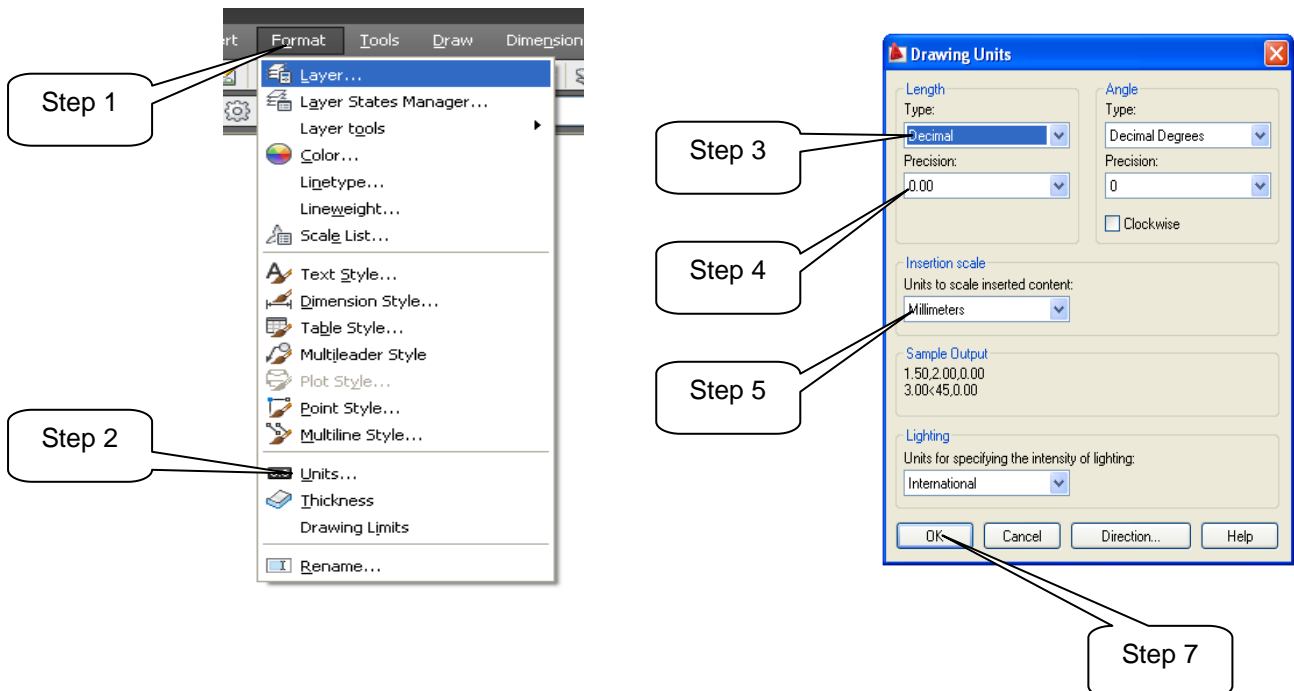
## Introduction

In most situations, when something directive was given, AUTOCAD requires additional information .This additional information may be in coordinate, value pnumeric, shift, modifier, file name etc.

Coordinate is significant basic point. Coordinate system used by Autocad is important and must be understood seriously

## Job Step :

### Set the UNITS



**Step 6 : Don't make any changes if not necessary**

## Set the LIMITS

### A3 paper

Command: limits

Specify lower left corner or [ON/OFF] <0.00,0.00>: 0,0

Specify upper right corner <12.00,9.00>: **420,297**

Command: zoom

Specify corner of window, enter a scale factor (nX or nXP), or

[All/Center/Dynamic/Extents/Previous/Scale/Window/Object] <real time>: a

### A4 paper

Command: limits

Specify lower left corner or [ON/OFF] <0.00,0.00>: 0,0


Specify upper right corner <12.00,9.00>: **297,210**

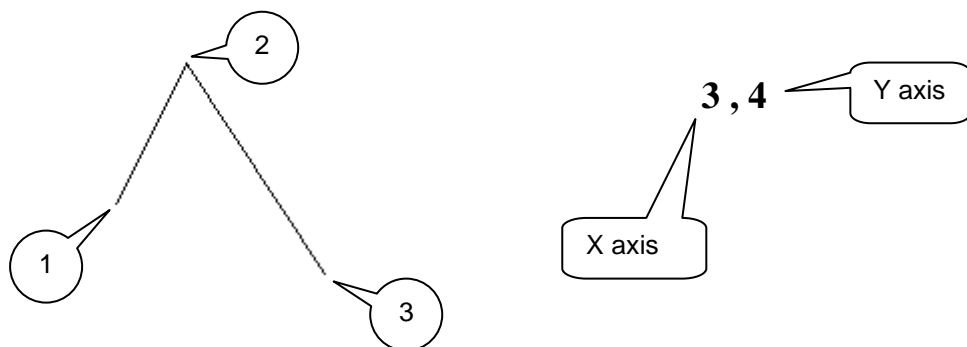
Command: zoom

Specify corner of window, enter a scale factor (nX or nXP), or

[All/Center/Dynamic/Extents/Previous/Scale/Window/Object] <real time>: a

## Use the Line Command with Absolute Coordinate

- To begin the Line command. Click  LINE
- Specify a point in the drawing window for the first point
- Enter the absolute coordinate as shown below




Command: \_line Specify first point: 2,2 ----- (1)

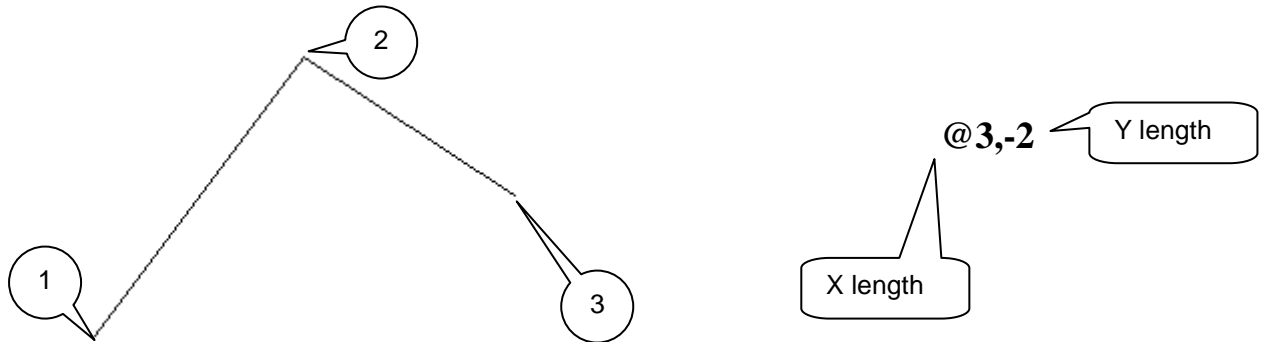
Specify next point or [Undo]: 3,4 -----(2)

Specify next point or [Undo]: 5,1 -----(3)

Specify next point or [Close/Undo]:

## Use the Line Command with Relative Coordinate

- To begin the Line command. Click  LINE
- Specify a point in the drawing window for the first point
- Enter the relative coordinate as shown below




Command: `_line` Specify first point: 2,2 -----(1)

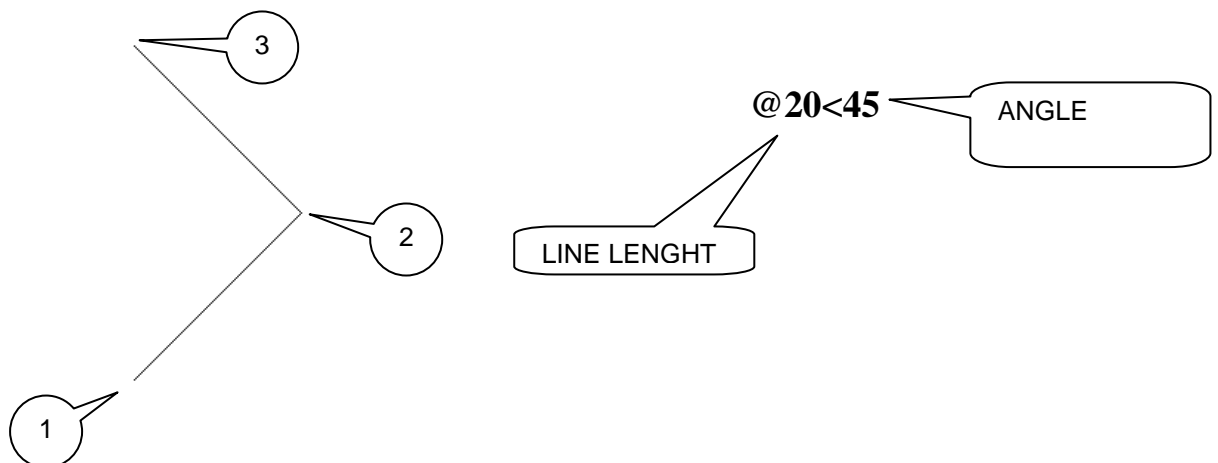
Specify next point or [Undo]: `@3,4` -----(2)

Specify next point or [Undo]: `@3,-2` -----(3)

Specify next point or [Close/Undo]:

## Use the Line Command with Relative Polar Coordinate

- To begin the Line command. Click  LINE
- Specify a point in the drawing window for the first point
- Enter the polar coordinate as shown below

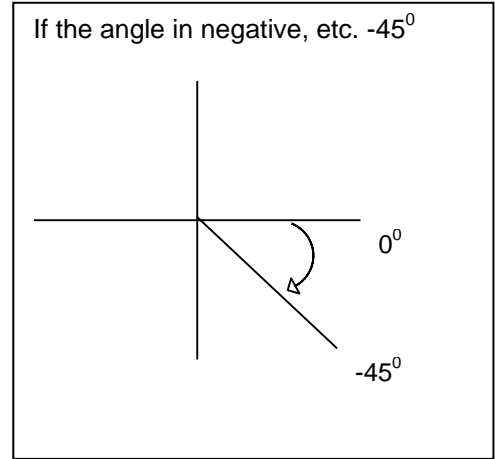
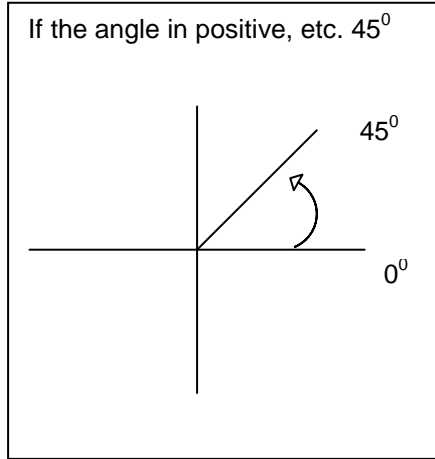


Command: \_line Specify first point: 2,2

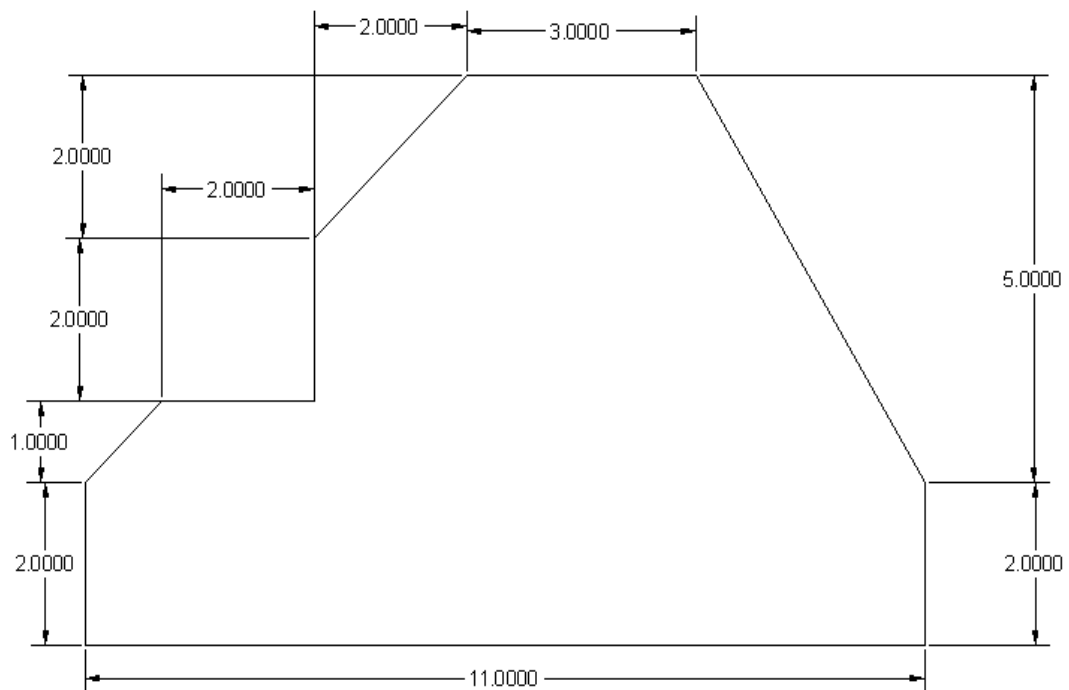
Specify next point or [Undo]: @20<45

Specify next point or [Undo]: @20<135

Specify next point or [Close/Undo]:



### Example for Coordinate System



### **Steps of command for absolute coordinate**

Command: \_line Specify first point: 2,2  
Specify next point or [Undo]: 2,4  
Specify next point or [Undo]: 3,5  
Specify next point or [Close/Undo]: 5,5  
Specify next point or [Close/Undo]: 5,7  
Specify next point or [Close/Undo]: 7,9  
Specify next point or [Close/Undo]: 10,9  
Specify next point or [Close/Undo]: 13,4  
Specify next point or [Close/Undo]: 13,2  
Specify next point or [Close/Undo]: 2,2  
Specify next point or [Close/Undo]: ↵

### **Steps of command for relative coordinate**

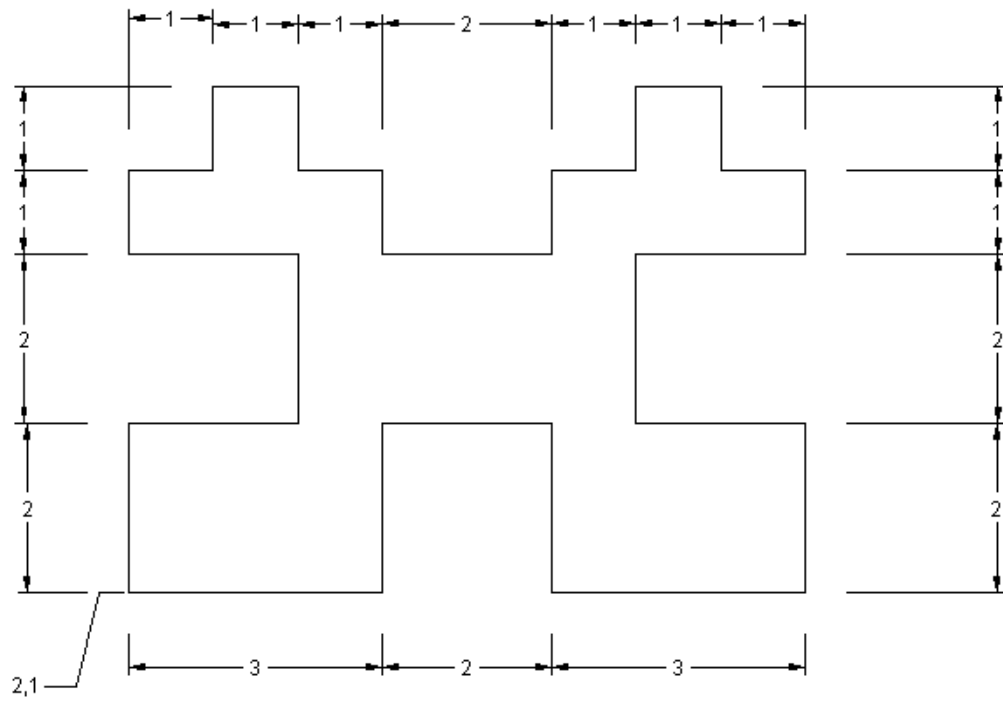
Command: \_line Specify first point: 2,2  
Specify next point or [Undo]: @0,2  
Specify next point or [Undo]: @1,1  
Specify next point or [Close/Undo]: @2,0  
Specify next point or [Close/Undo]: @0,2  
Specify next point or [Close/Undo]: @2,2  
Specify next point or [Close/Undo]: @3,0  
Specify next point or [Close/Undo]: @3,-5  
Specify next point or [Close/Undo]: @0,-2  
Specify next point or [Close/Undo]: 2,2  
Specify next point or [Close/Undo]: ↵

### **Steps of command for relative coordinate and polar coordinate**

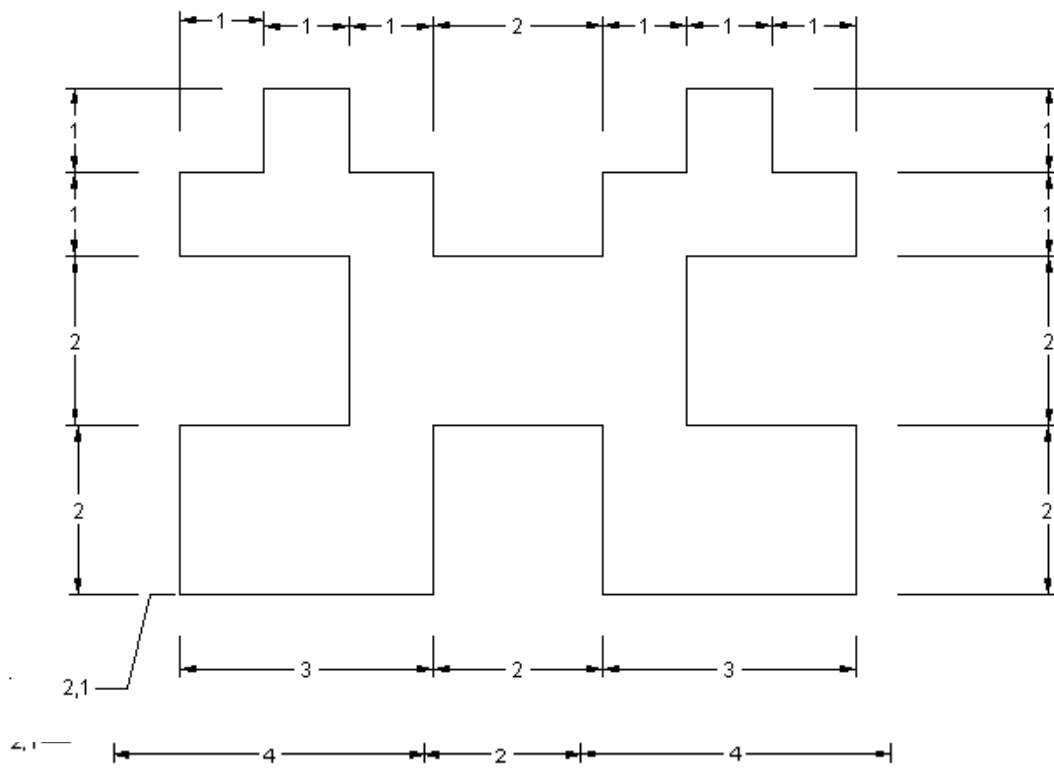
Command: \_line Specify first point: 2,2  
Specify next point or [Undo]: @2<90  
Specify next point or [Undo]: 3,5  
Specify next point or [Close/Undo]: @2<0  
Specify next point or [Close/Undo]: @0,2  
Specify next point or [Close/Undo]: 7,9  
Specify next point or [Close/Undo]: @3<0  
Specify next point or [Close/Undo]: 13,4  
Specify next point or [Close/Undo]: @2<270  
Specify next point or [Close/Undo]: @-11,0  
Specify next point or [Close/Undo]: ↵

# EXERCISES

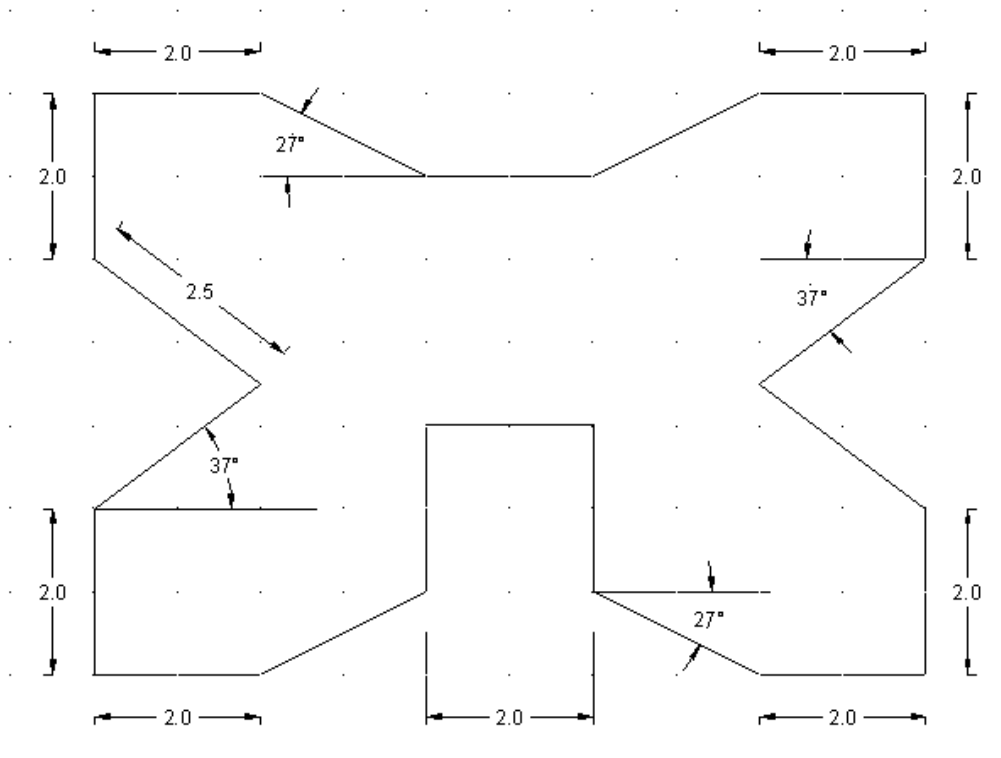
## EXERCISE 1



## EXERCISE 2



### EXERCISE 3



### SKEMA

#### QUESTION 1

Command: `_line` Specify first point: 2,1  
 Specify next point or [Undo]: 2,3  
 Specify next point or [Undo]: 4,3  
 Specify next point or [Close/Undo]: 4,5  
 Specify next point or [Close/Undo]: 2,5  
 Specify next point or [Close/Undo]: 2,6  
 Specify next point or [Close/Undo]: 3,6  
 Specify next point or [Close/Undo]: 3,7  
 Specify next point or [Close/Undo]: 4,7  
 Specify next point or [Close/Undo]: 4,6  
 Specify next point or [Close/Undo]: 5,6  
 Specify next point or [Close/Undo]: 5,5  
 Specify next point or [Close/Undo]: 7,5  
 Specify next point or [Close/Undo]: 7,6  
 Specify next point or [Close/Undo]: 8,6

Specify next point or [Close/Undo]: 8,7  
 Specify next point or [Close/Undo]: 9,7  
 Specify next point or [Close/Undo]: 9,6  
 Specify next point or [Close/Undo]: 10,6  
 Specify next point or [Close/Undo]: 10,5  
 Specify next point or [Close/Undo]: 8,5  
 Specify next point or [Close/Undo]: 8,3  
 Specify next point or [Close/Undo]: 10,3  
 Specify next point or [Close/Undo]: 10,1  
 Specify next point or [Close/Undo]: 7,1  
 Specify next point or [Close/Undo]: 7,3  
 Specify next point or [Close/Undo]: 5,3  
 Specify next point or [Close/Undo]: 5,1  
 Specify next point or [Close/Undo]: 2,1  
 Specify next point or [Close/Undo]: ↵